



Bauxite cargo from Bald Hill Mine, Tasmania ready for early shipment

Australian Bauxite Limited (ASX: ABX) has produced its next cargo of 35,000 tonnes of cement grade bauxite from its Bald Hill mine near Campbell Town northern Tasmania ahead of schedule. Trucking to port will be completed in the next few days and ship-loading commences on 8 August.

ABx is well known for producing bauxite to customers' specifications for both cement and fertiliser manufacture. ABx and its customers have been able to press ahead during the COVID-19 pandemic and ABx was able to secure sales contracts for fertiliser-grade bauxite and cement-grade bauxite that totalled more than \$2.5 million.

This project was accelerated so as to use the transport and port infrastructure during a period of under-utilisation, to benefit from low fuel prices and to allow the cement-grade customer to take advantage of shipping opportunities. The strategy has worked well for all concerned.



Figure 1

Truck loading at sunrise, Bald Hill.

Five road trucks being loaded with bauxite for transport to Bell Bay Port.

These trucks remain on ABx's roads that are built with certified weed-free road base so as to comply with ABx's agricultural policies.

Figure 2

Midday truck loading, Bald Hill.

Road trucks make multiple trips to and from Bell Bay port. The truck being loaded has a payload of 45 tonnes



Figure 3

Precision mining the 6 metre thick bauxite orebody with the 85-tonne excavator

Mine and Transport

ABx has long-standing relationships with experienced contractors that are well known for meeting the strict specification targets and complying with community and landholder requirements.

Mining, processing and blending at the mine site was done by Hazell Bros contractors and transporting to Bell Bay port was by Dave Wagner & Son Pty Ltd.



Figure 4

Final stages of mining and screening are kept tight to minimise the footprint of mine operations for efficient rehabilitation – see Figure 5 below.

Figure 5

Rehabilitated land in the foreground and bottom right is now being cropped with good yields.

Pre-mining, the rocky ridge was only suited to grazing but stone-removal by rock-picking machines and reseeding to landholder specifications has resulted in an improved outcome.

ABx's paramount policy is to implement best practices on agricultural land and strive to leave land and environment better than we find it.

We only operate where welcomed.



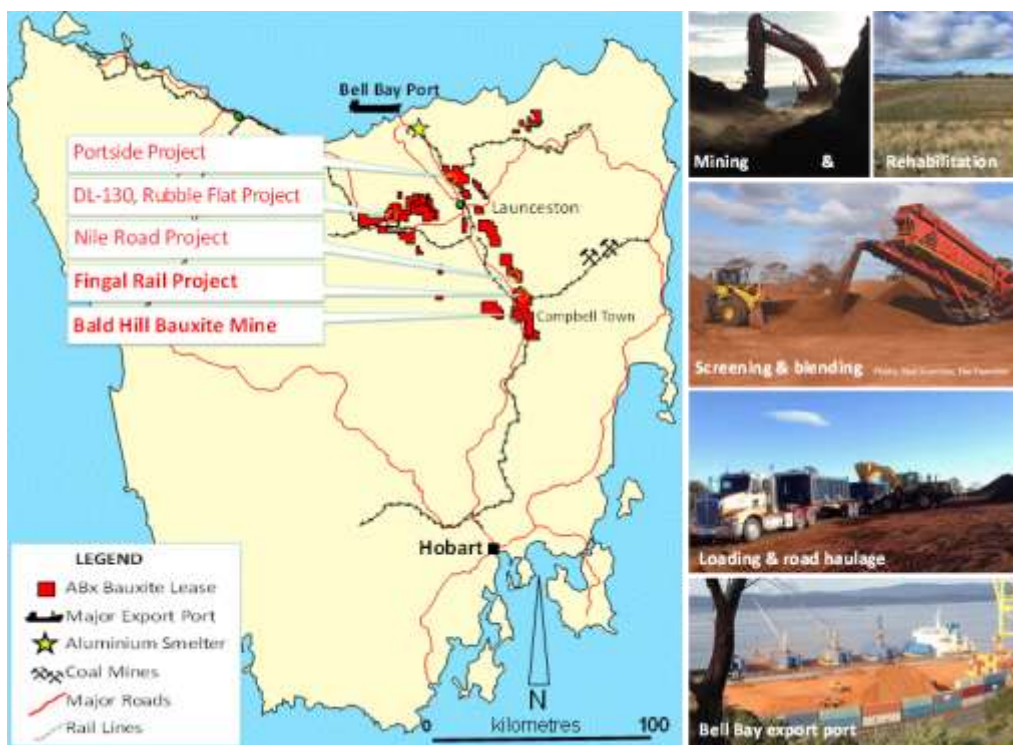
Port Contracts

ABx has port agreements with TasPorts and has contracted with QUBE Ports at Bell Bay for the stevedoring services and stockpiling arrangements. Monson Shipping have provided Shipping Agents services and Briar Maritime have provided independent ship surveys to date.



ASX: ABX

Figure 6
Assembling the cargo stockpile at Bell Bay port ready for ship-loading in a way that creates a uniform product specification when delivered to the customer



Locations

Figure 7
Locations of ABx bauxite mines, projects and transport infrastructure in Tasmania

For further information please contact:

Ian Levy, CEO and Managing Director
Australian Bauxite Limited
Mobile: +61 407 189 122

This release has been approved for release by the Board of ABx.



ASX: ABX

About Australian Bauxite Limited

ASX Code ABX **Web: www.australianbauxite.com.au**

Australian Bauxite Limited (ABx) has its first bauxite mine in Tasmania & holds the core of the Eastern Australian Bauxite Province. ABx's 11 bauxite tenements in Queensland, New South Wales & Tasmania totalled 662 km². All tenements are 100% owned, unencumbered & free of third-party royalties. ABx's bauxite is gibbsite trihydrate (THA) bauxite that can be processed into alumina at low temperature.

ABx has committed a large proportion of its expenditure into Research and Development to find ways to capitalise on the main strengths of its bauxite type which is very clean, free of all deleterious elements and partitioned into layers, nodules, particles and grains of different qualities that can be separated into different product streams using physical, chemical and geophysical methods.

ABx has declared large Mineral Resources in northern NSW, southern NSW, Binjour in central QLD & in Tasmania, confirming that ABx has discovered significant bauxite deposits.

ABx's first mine commenced at Bald Hill near Campbell Town, Tasmania in December 2014 – the first new Australian bauxite mine for more than 35 years.

ABx aspires to identify large bauxite resources in the Eastern Australian Bauxite Province, which is a globally significant bauxite province. ABx has created significant bauxite developments in 3 states - Queensland, New South Wales and Tasmania. Its bauxite deposits are favourably located for direct shipping of bauxite to both local and export customers.

ABx endorses best practices on agricultural land, strives to leave land and environment better than we find it.

We only operate where welcomed.

About ALCORE Limited:



Australian Bauxite Limited (ABx) has incorporated ALCORE Limited as a wholly-owned subsidiary to fund and manage the Alcore Project, to lead to the construction of an Alcore Production Plant to produce Aluminium Fluoride (AlF₃) and valuable co-products, using patent (pending) new technology. The Alcore Technology is designed to convert low grade bauxite worth \$50 per tonne into a suite of valuable products worth more than \$800 per tonne. Site construction works for Stage 1 of the Alcore project commenced on 1 July 2019 at Alcore's high-technology Research Centre in Berkeley Vale, Central Coast NSW.

Alcore project is currently focussed on producing AlF₃ test samples for pre-qualified aluminium smelter customers. It can also produce Corethane, which is pure hydrocarbon powder to provide thermal and electrical power with low CO₂ emissions when used as a gas-substitute or as a diesel substitute for fuel security purposes and is ideally suited for use as a sulphur-free bunker fuel.

Directors of ABx

Paul Lennon	Chairman
Ian Levy	CEO & MD
Ken Boundy	Director
Henry Kinstlinger	Company Secretary

Officers

Leon Hawker	Chief Operating Officer
Jacob Rebek	Chief Geologist
Paul Glover	Marketing, Exploration & Relationships
Nathan Towns	Operations Manager
Dr Mark Cooksey	General Manager Alcore Limited