



AUSTRALIAN **BAUXITE** LIMITED

ASX: ABX

**ASX ANNOUNCEMENT**

**23 October 2017**

### **Major Shipments on Track from Bell Bay Tasmania**

Loading of the next two bauxite cargoes of bauxite producer, Australian Bauxite Limited (ABx) commenced at Berth 6, Bell Bay Port, Tasmania on 21<sup>st</sup> October. The ship, MV Marianna is scheduled to depart on 24<sup>th</sup> October. Ship scheduling and associated logistics in making the cargoes available have gone smoothly, with ABx delivering the two cargos weeks ahead of deadlines.

All product testing essential for safe shipment is complete with excellent results and shipper declarations have been presented as required. Product sampling during loading is being done by ABx as part of its normal quality assurance process.

Survey of the ship's draft will determine the final cargo loading. The initial 30,000 tonnes of blended Mixed Grade Bauxite (Product 04.100) plus an additional 5,000 tonnes of Cement-grade bauxite (Product 04.15) that will be carried in separate holds on the same ship. This multiple cargo operation demonstrates ABx's ability to supply customers with different specifications tailored to their needs.

### **Mine Site Operations**

Stornoway Projects Pty Ltd carried out the specialist operations at the Bald Hill Bauxite Project mine site, including an important product assembly procedure that allows the blending of product to customer's specification. Bald Hill was the first new bauxite mine in Australia for more than 30 years.

### **Land Transport Arrangements**

Dave Wagner & Son Pty Ltd has delivered the bauxite from the mine stockpile to port of Bell Bay ahead of schedule. Wagners transported the previous bauxite shipments and works well with all stakeholders.

### **Port Arrangements**

QUBE Logistics at Bell Bay provides the stevedoring services and the stockpiling arrangements, in conjunction with TasPorts.

ABx considers this consistent handling to be the best way to assure the tight quality controls that ABx wishes to be known for in the market. Inspections by two customers' agents confirmed this.

Our customers appreciate that:

*ABx bauxite is the best favour they can do for themselves and their cement plant.*

This sale is a continuation of ABx's ongoing business, which is due to be expanded by additional purchasing from several offshore centres, subject to appropriate currency exchange rates.

### **Fertiliser Sales Increased**

ABx's sales into the fertiliser industry have ramped up to satisfy customer demand over the summer period. This continues to be modest but valuable business supplying local industry.

### **For further information please contact:**

Ian Levy, CEO and MD Australian Bauxite Limited

Telephone: +61 (0) 2 9251 7177

Mobile: +61 (0) 407 189 122

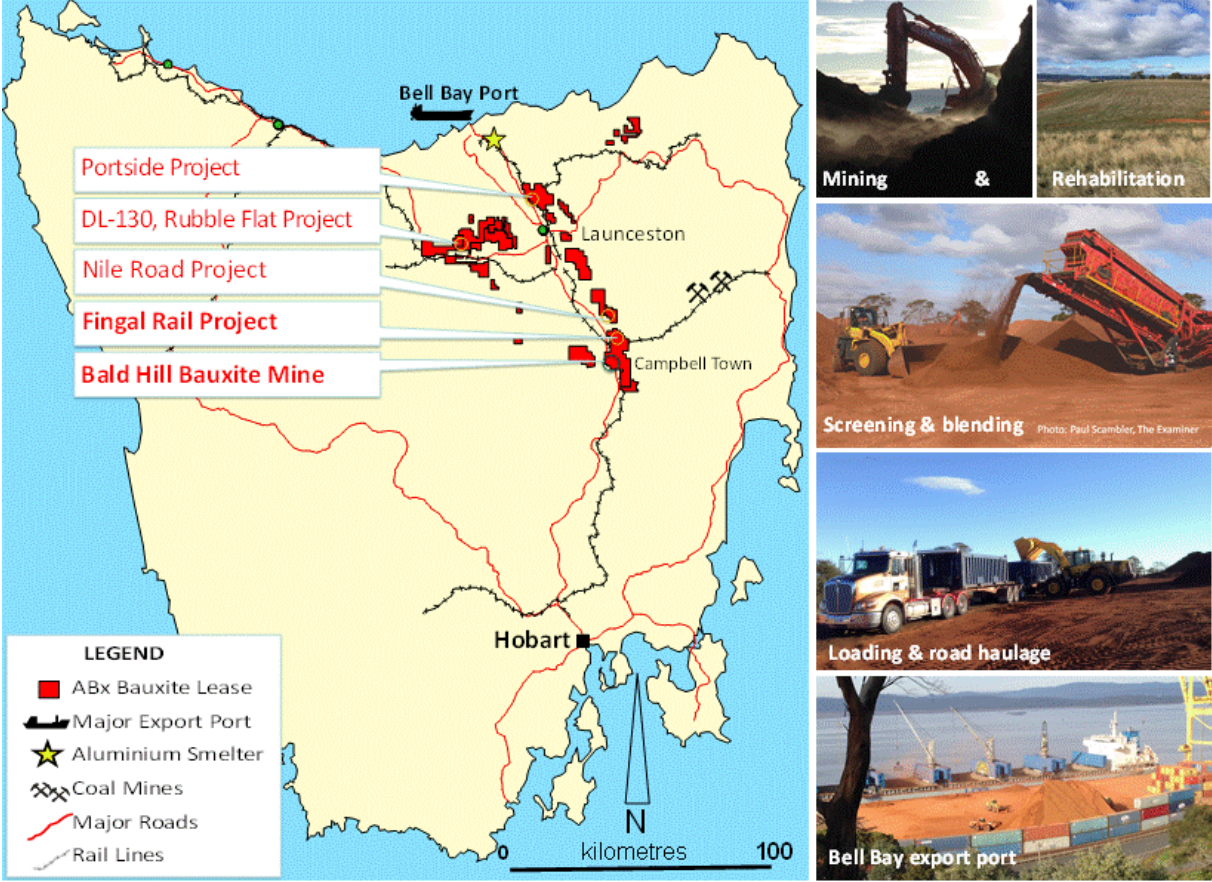


Figure 1: Locations of ABx bauxite mines, projects and transport infrastructure in Tasmania



Figure 2: The M/V Marianna (in distance) being loaded with 35,000 tonnes of bauxite from the two large port stockpiles (in foreground) at Bell Bay export port, Tasmania





Figure 3: The M/V Marianna being loaded with 35,000 tonnes of bauxite at Bell Bay export port



Figure 4: Ships cranes and clamshell grabs at work whilst front end loaders heap up the bauxite for faster loading

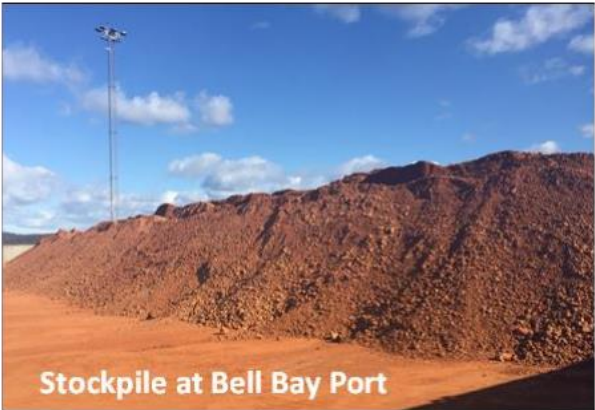


Figure 5: ABx supply chain operations from pit to mine stockpiles, blending, transport and stockpiling at Bell Bay Port.





Figure 6 (left)

ABx blends bauxite at the mine site and at all stages of delivery to maximise mixing, thus providing a consistent product.

Figure 7 (below)

ABx Project Tenements & Major Infrastructure in Tasmania, NSW & QLD, Eastern Australia

### About Australian Bauxite Limited

**ASX Code ABX** Web: [www.australianbauxite.com.au](http://www.australianbauxite.com.au)

Australian Bauxite Limited (ABx) has its first bauxite mine in Tasmania & holds the core of the Eastern Australian Bauxite Province. ABx's 22 bauxite tenements in Queensland, New South Wales & Tasmania exceed 1,975 km<sup>2</sup> & were selected for (1) good quality bauxite; (2) near infrastructure connected to export ports; & (3) free of socio-environmental constraints. All tenements are 100% owned, unencumbered & free of third-party royalties.

ABx's discovery rate is increasing as knowledge, technology & expertise grows. The Company's bauxite is high quality gibbsite trihydrate (THA) bauxite that can be processed into alumina at low temperature.

ABx has declared large Mineral Resources at Inverell & Guyra in northern NSW, Taralga in southern NSW, Binjour in central QLD & in Tasmania, confirming that ABx has discovered significant bauxite deposits including some of outstandingly high quality.

ABx's first mine commenced at Bald Hill near Campbell Town, Tasmania in December 2014 – the first new Australian bauxite mine for more than 35 years.

ABx aspires to identify large bauxite resources in the Eastern Australian Bauxite Province, which is a globally significant bauxite province. ABx has created significant bauxite developments in 3 states – Queensland, New South Wales and Tasmania. Its bauxite deposits are favourably located for direct shipping of bauxite to both local and export customers.

**ABx endorses best practices on agricultural land, strives to leave land and environment better than we find it. We only operate where welcomed.**

#### Directors & Officers

Paul Lennon	Chairman
Ken Boundy	Director
Ian Levy	CEO & MD
Henry Kinstlinger	Company Secretary
Leon Hawker	Chief Operating Officer
Jacob Rebek	Chief Geologist
Paul Glover	Logistics & Exploration Manager

